

# J. J. Keller® Dash Cam Quick Installation Guide

These instructions are valid for road- and dual-facing J. J. Keller® Encompass and VideoProtects™ dash camera styles.

## 1. POSITION THE CAMERA

1. Determine the ideal position of the camera
  - The camera must be installed above the horizontal middle of the windshield and within 5 cm of vertical center.
  - Position the camera within the working range of the windshield wipers.
2. Mark camera location with an X.



## 2. INSTALL THE MOUNTING BRACKET

1. Clean the interior glass around the installation area with an alcohol wipe to promote strong adhesion of the mounting bracket. Ensure the glass is dry before application.
2. Align the bracket hole with the two mounts on the top of the dash cam. The grooved hole should face the driver's window.
3. Remove the 3M adhesive on the bracket and position the bracket on the 'X'. Apply pressure on the bracket for 10 seconds to remove air bubbles between the bracket and the glass.

## 3. INSTALL THE CAMERA

For your consideration:

1. Connect the camera to the bracket by inserting the bolt and adjusting the camera to the vertical position relative to the bracket. The grooves on the bracket will engage with those on the camera.
2. Tighten clockwise with #2 Phillips screwdriver.



## 4. CONNECT TO POWER SUPPLY

Power can be supplied to the Dash Cam in one of four ways:

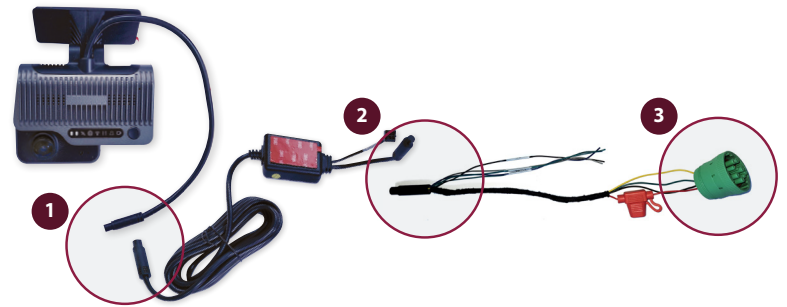
1. 9-pin (Wiring Kit & Y-Splitter sold separately)
2. OBD-II (Wiring Kit & Y-Splitter sold separately)
3. Cigarette Adapter (Sold separately)
4. Hardwire Connection (Included in Dash Camera box)

The Y-splitter allows additional telematic device connections to the diagnostic port.

### 9-Pin Connection

#### Without Y-Splitter

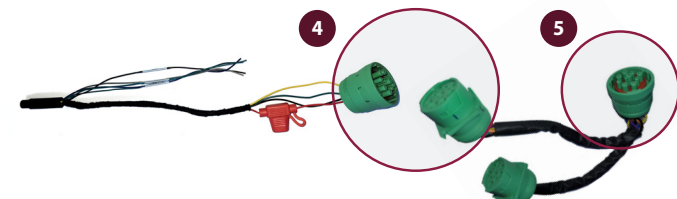
1. Plug female connector from camera into the male end of power box harness.
  2. Connect female end of power box harness to male end of 9-pin connector.
  3. Plug 9-pin harness directly into the vehicle's diagnostic port.
- Route and secure cables with zip ties.



#### With Y-Splitter

Follow steps 1 and 2 above.

4. Plug male end of the 9-pin connector into one of the female Y-splitters.
  5. Plug male end of the Y-splitter into the vehicle's diagnostic port.
- Route and secure cables with zip ties.

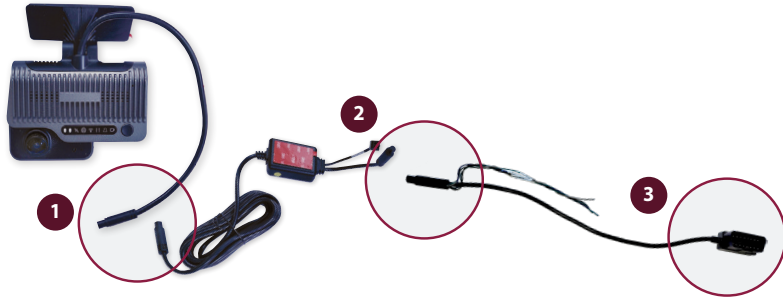


## OBD-II Connection

### Without Y-Splitter

1. Plug female connector from camera into male end of the power box harness.
2. Connect female end of power box harness to male end of OBD-II connector.
3. Plug OBD-II harness directly into the vehicle's diagnostic port.

Route and secure cables with zip ties.

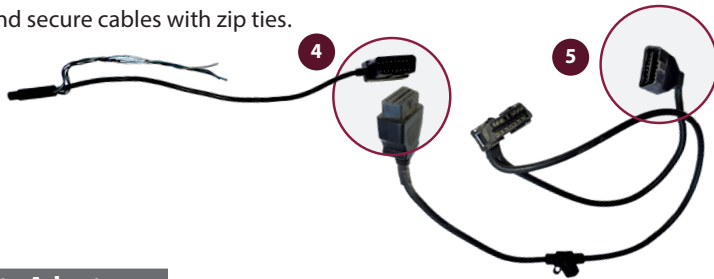


### With Y-Splitter

Follow steps 1 and 2 above.

4. Plug male end of OBD-II connector into one of the female Y-splitters.
5. Plug male end of Y-splitter into the vehicle's diagnostic port.

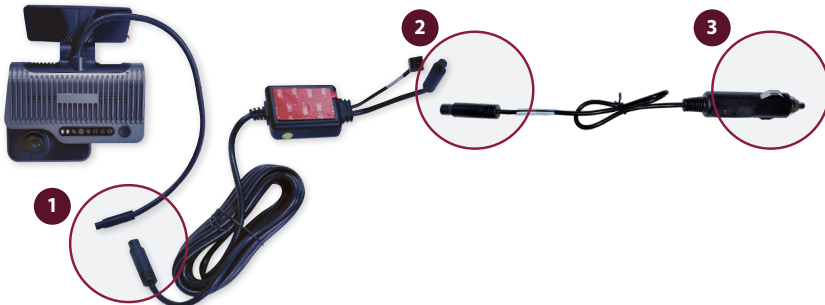
Route and secure cables with zip ties.



## Cigarette Adapter

1. Plug female harness from the camera into male end of the power box harness.
2. Connect female end of the power box harness to male end of cigarette adapter.
3. Plug cigarette adapter into vehicle's auxiliary power port.

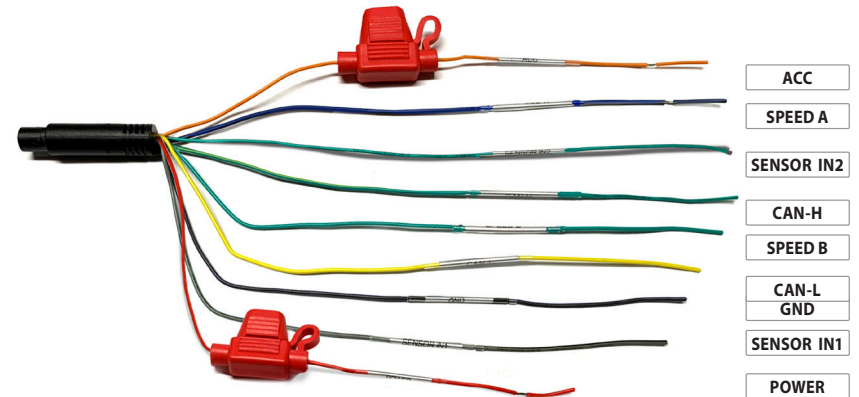
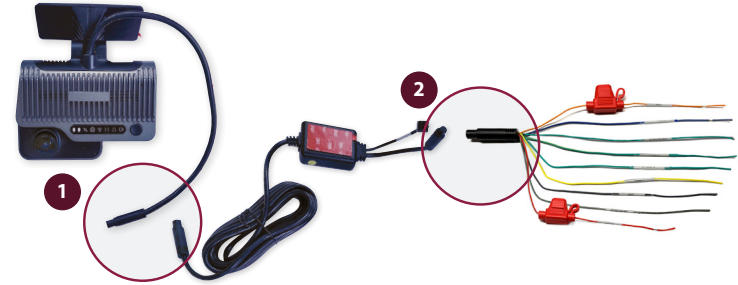
Route and secure cables with zip ties.



## Hardwire Connection

Professional installation is recommended. Contact your J. J. Keller sales representative for a quote on installation or use a skilled technician.

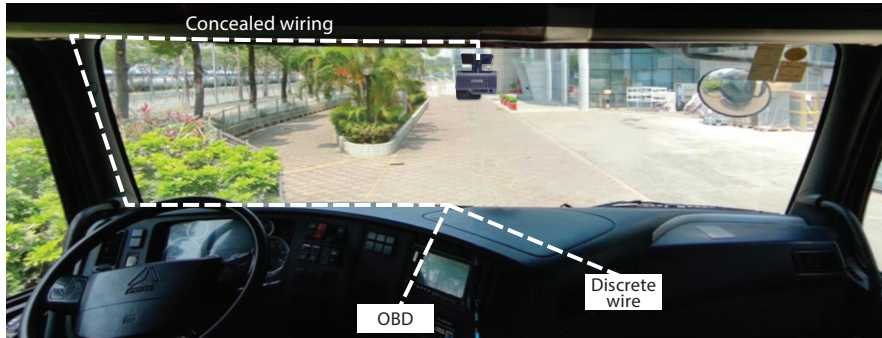
1. Plug female harness from camera into male end of the power box harness.
2. Connect female end of power box harness to the hardwire connector.



3. Connect **ACC** to the ignition signal cable of vehicle
4. **SPEED A** wire is not used
5. **OPTIONAL:** Use only if enabling Lane Departure alarm. Connect **SENSOR IN2** to vehicle's RIGHT blinker signal cable.
6. **CAN-H** wire is not used
7. **SPEED B** wire is not used
8. **CAN-L** wire is not used
9. Connect **GND** to the vehicle's ground wire
10. **OPTIONAL:** Use only if enabling Lane Departure alarm. Connect **SENSOR IN1** to vehicle's LEFT blinker signal cable.
11. Connect **POWER** to the vehicle's constant power supply
12. Route and secure cables with zip ties

## 5. SECURE ALL CABLES

1. Secure all cables by routing them under the headliner and behind the trim panels, or with zip ties and mounting blocks.
2. Securely fasten any cables located under the dash so they are out of the way of the operator.



## 6. VALIDATE POWER

1. Verify all power cables are connected.
2. Turn on the vehicle's engine and wait two minutes.
3. The dash cam power light in the status bar should be green.
4. Remove the blue protective film from the lens.

*NOTE: The four infrared lights surrounding the driver-facing camera may be visible depending on the ambient light conditions inside the vehicle.*



Many states have laws that either restrict or prohibit mounting objects on windshields. Specific laws vary from state to state. Before mounting the dash camera, check the state and local laws and ordinances where you drive. It is the user's responsibility to mount the dash camera in compliance with all applicable laws and ordinances. J. J. Keller and Associates, Inc. does not accept responsibility for any fines, penalties, or damages that may be incurred as a result of any state or local law or ordinance relating to your use of the dash cam.

For additional dash cam setup and configuration guidance, visit the [J. J. Keller Dash Camera support site](#).